



2 NORTH ELEVATION - 65TH STREET

1" = 20'-0"



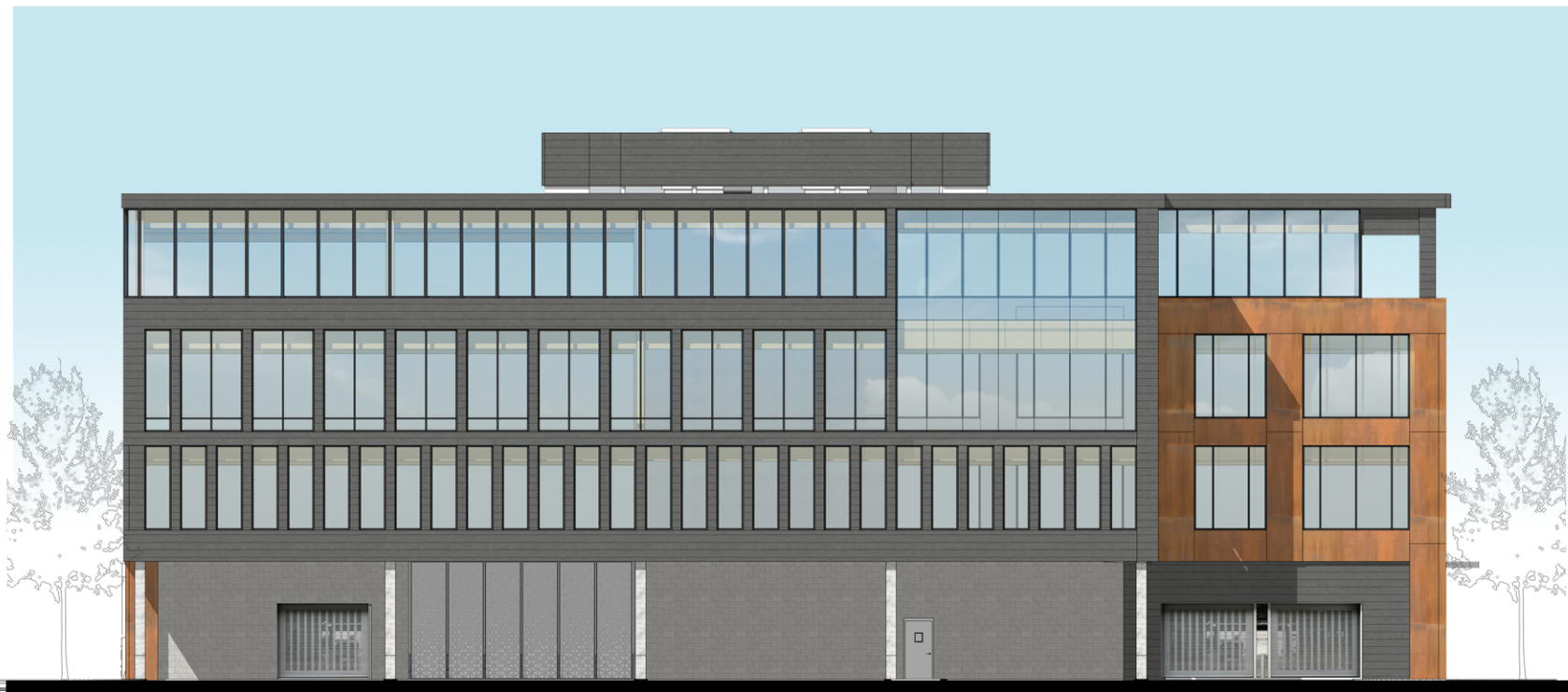
1 WEST ELEVATION - FERGUSON STREET

1" = 20'-0"



4 SOUTH ELEVATION

1" = 20'-0"



3 EAST ELEVATION - ALLEY

1" = 20'-0"

65TH + FERGUSON - PROPOSED ELEVATIONS

GERSHMAN PARTNERS